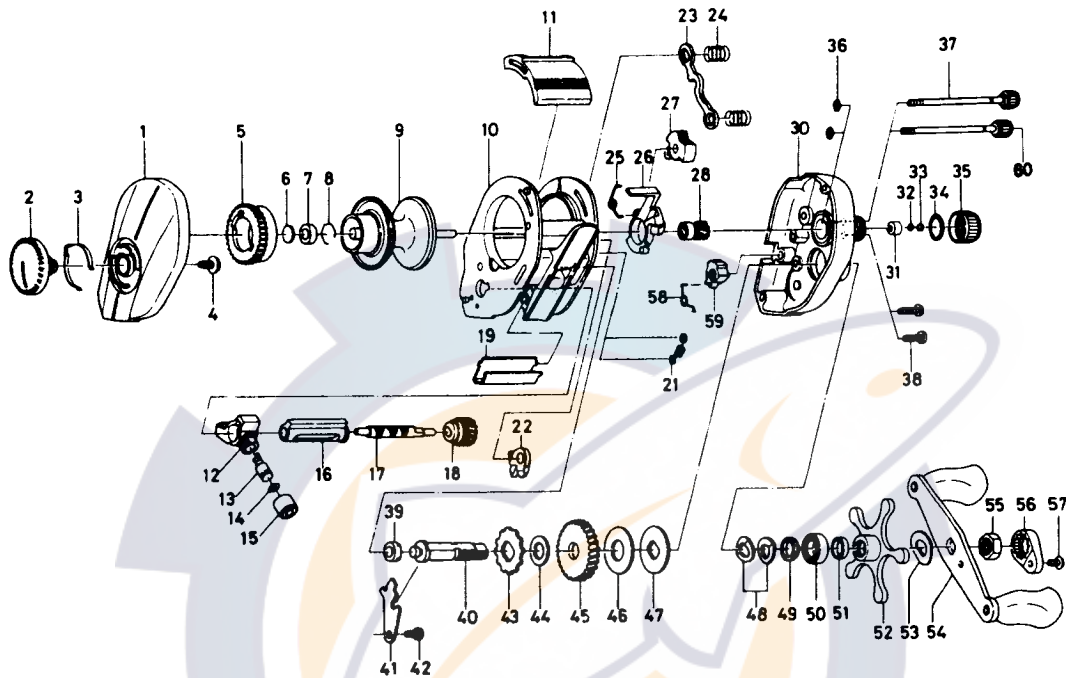




BAITCASTING REEL MA10-3B/15-3B



| Key No. | Parts No. | Parts Name | Key No. | Parts No. | Parts Name |
|---------|-----------|----------------------------|---------|-----------|----------------------------|
| 1 | E 23-8903 | Left side plate | 37 | B 91-1706 | Right side plate screw A |
| 2 | E 23-9701 | Brake adjusting knob | 38 | E 13-0502 | Set plate screw |
| 3 | B 74-7702 | Brake click spring | 39 | B 55-0301 | Bushing B |
| 4 | B 84-2102 | Brake adjusting knob screw | 40 | E 23-7501 | Drive shaft |
| 5 | E 23-9501 | Magnet holder | 41 | E 23-7601 | Drive shaft retainer |
| 6 | 375-7400 | Spacer A | 42 | B 83-4402 | Drive shaft retainer screw |
| 7 | B 35-8601 | Ball bearing A | 43 | E 32-7701 | Anti-reverse ratchet |
| 8 | B 42-1601 | Bearing retainer | 44 | 375-7103 | Drive shaft washer |
| 9 | F 00-9001 | Spool assembly | 45 | B 85-2101 | Drive gear |
| 10 | E 37-0402 | Frame assembly | 46 | B 36-0202 | Drag washer A |
| 11 | E 23-7102 | Clutch lever | 47 | B 36-0301 | Key washer |
| 12 | E 16-6301 | Line guide | 48 | 150-8901 | Drag spring washer |
| 13 | 121-4212 | Line guide pawl | 49 | E 20-8501 | Spacing sleeve A |
| 14 | 375-4100 | Line guide washer | 50 | E 15-4001 | Ball bearing B |
| 15 | 342-4801 | Pawl cap | 51 | B 97-4901 | Spacing sleeve B |
| 16 | E 23-8201 | Level wind guard | 52 | B 86-4202 | Star drag |
| 17 | E 24-7101 | Worm shaft | 53 | 150-9001 | Friction washer |
| 18 | B 99-2001 | Worm shaft gear | 54 | E 24-0403 | Handle assembly |
| 19 | E 24-9401 | Line guard | 55 | B 43-3601 | Handle nut |
| 21 | E 30-6001 | Clutch trip plate spring | 56 | B 43-3903 | Handle nut plate |
| 22 | E 23-8001 | Anti-reverse pawl | 57 | 351-1803 | Handle nut plate screw |
| 23 | E 23-7701 | Yoke | 60 | B 91-1707 | Right side plate screw B |
| 24 | E 16-7101 | Yoke spring | | | |
| 25 | E 24-9001 | Clutch cam spring | | | |
| 26 | E 23-7401 | Clutch cam | | | |
| 27 | E 24-9101 | Flipping selector | | | |
| 28 | E 24-9201 | Pinion gear | | | |
| 30 | E 23-8317 | Right side plate | | | |
| 31 | E 34-2401 | Bushing A | | | |
| 32 | E 16-9201 | Spool adjusting cap metal | | | |
| 33 | E 17-0501 | Spacer B | | | |
| 34 | 171-5201 | "O" ring A | | | |
| 35 | E 23-8401 | Cast control cap | | | |
| 36 | B 85-3101 | "O" ring B | | | |

| MA15-3B Special parts | | |
|-----------------------|-----------|---------------------------|
| 1 | E 23-8906 | Left side plate |
| 9 | F 00-9201 | Spool assembly |
| 10 | E 37-0802 | Frame assembly |
| 11 | E 28-3702 | Clutch lever |
| 16 | E 31-2001 | Level wind guard |
| 17 | E 28-4601 | Worm shaft |
| 19 | E 31-0301 | Line guard |
| 30 | E 23-8319 | Right side plate |
| 37 | B 91-1708 | Right side plate screw A |
| 58 | E 31-1801 | Anti-reverse lever spring |
| 59 | E 30-9501 | Anti-reverse lever |
| 60 | B 91-1709 | Right side plate screw B |